

# Parker Bohn III Junior Scholarship Tournament



**Oil Pattern Distance:** 39 Feet      **Reverse Brush Drop:** 39 Feet      **Oil Per Board:** 50 uL  
**Forward Oil Total:** 14.6 mL      **Reverse Oil Total:** 11.1 mL      **Volume Oil Total:** 25.7 mL  
**Forward Boards Crossed:** 292 Boards      **Reverse Boards Crossed:** 222 Boards      **Total Boards Crossed:** 514 Boards

Start	Stop	Loads	Speed	Crossed	Start	End	Feet	T.Oil
1	2L	2R	3	18	111	0.0	5.1	5550
2	6L	6R	1	18	29	5.1	7.6	1450
3	7L	7R	2	22	54	7.6	13.8	2700
4	8L	8R	3	22	75	13.8	23.1	3750
5	9L	9R	1	22	23	23.1	26.2	1150
6	2L	2R	0	26	0	26.2	39.0	0

Forward Reverse More

Start	Stop	Loads	Speed	Crossed	Start	End	Feet	T.Oil	
1	2L	2R	0	30	0	39.0	30.0	-9.0	0
2	8L	8R	1	22	25	30.0	26.9	-3.1	1250
3	7L	7R	4	22	108	26.9	14.5	-12.4	5400
4	6L	6R	2	22	58	14.5	8.3	-6.2	2900
5	5L	5R	1	22	31	8.3	5.2	-3.1	1550
6	2L	2R	0	22	0	5.2	0.0	-5.2	0

Forward Reverse More

Conditioner:  
Type In or Select One

TransferType:  
Type In or Select One

Forward



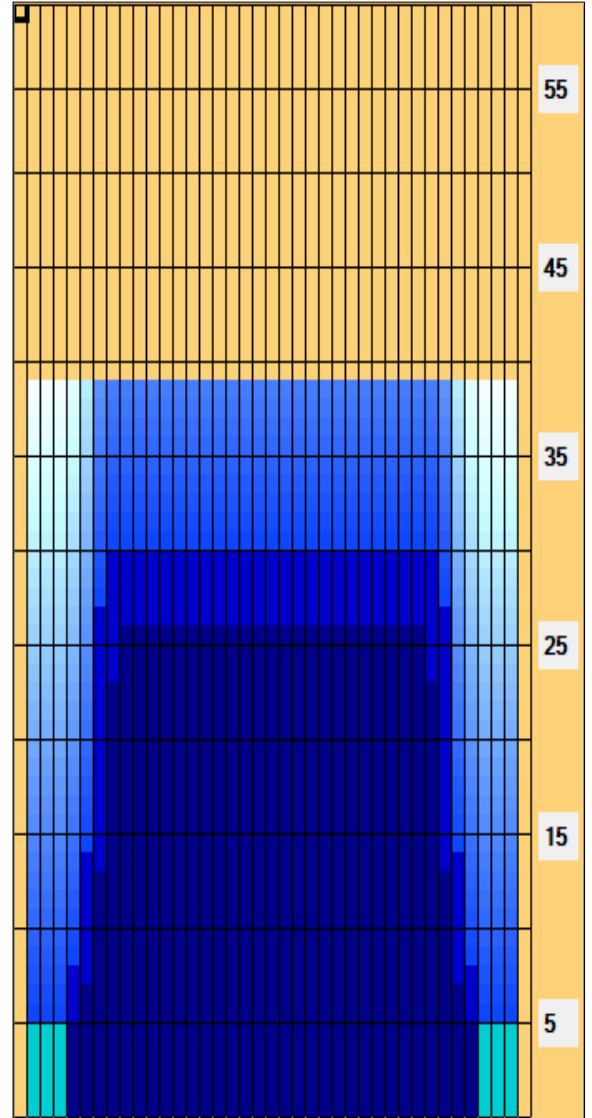
Reverse



Combined



Buff



Item	3L-7L:18L-18R	8L-12L:18L-18R	13L-17L:18L-18R	18L-18R:17R-13R	18L-18R:12R-8R	18L-18R:7R-3R
Description	Outside Track:Middle	Middle Track:Middle	Inside Track:Middle	Middle: Inside Track	Middle:Middle Track	Middle:Outside Track
Track Zone Ratio	3	1.01	1	1	1.01	3

